

Your Water Meter

What is it

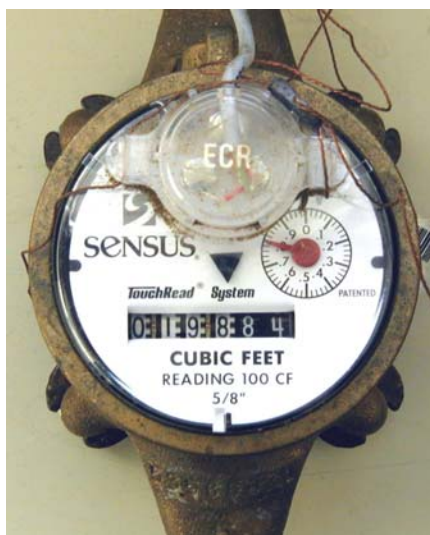
A water meter measures the amount of water entering your home or business. Most water meters are located in basements near the wall closest to the street. They can also be in a utility closet, mechanical room or outside in a pit in the ground. In Concord, the meters measure water use in cubic feet (cf). One cubic foot equals 7.48 gallons.

Our water meters use straight-reading dials that are read in the same way you read your car's odometer. As Concord calculates water bills based hundreds of cubic feet (ccf) or 748 gallons, the last two digits on the meter dial are disregarded when the meter is read. Concord water employees read your meter six times a year or every two months.



This meter reads 390 ccf

This meter reads 198 ccf



Your water meter can help you determine whether your water-using appliances and fixtures have “silent” leaks.

1. Turn off all faucets and water-using item both inside and outdoors. This includes ice-makers in refrigerators.
2. Check your meter. The little black or red triangle, or the red needle that rotates are low-flow indicators, or “leak detectors” that sense very low amounts of water passing through the meter. You have a leak if the leak detector is moving. You may also want to jot down the meter reading numbers and check back 30 to 60 minutes later (don't use any water). If the second reading is higher, you probably have a leak.

Unhappy with high water bills but don't have a leak? You can use your meter to track water usage throughout the day or week to determine when the water is being used.