

## APPENDIX A: NATURAL HAZARDS MAPS

The MAPC GIS (Geographic Information Systems) Lab produced a series of maps for each community. Some of the data came from the Northeast States Emergency Consortium (NESEC). More information on NESEC can be found at <http://www.serve.com/NESEC/>. Due to the various sources for the data and varying levels of accuracy, the identification of an area as being in one of the hazard categories must be considered as a general classification that should always be supplemented with more local knowledge. The documentation for some of the hazard maps was incomplete as well.

The map series consists of four panels with two maps each plus one map taken from the State Hazard Mitigation Plan.

Map 1.	Population Density
Map 2.	Potential Development
Map 3.	Flood Zones
Map 4.	Earthquakes and Landslides
Map 5.	Hurricanes and Tornadoes
Map 6.	Average Snowfall
Map 7.	Composite Natural Hazards
Map 8.	Hazard Areas

**Map 1: Population Density** – This map uses the US Census block data for 2000 and shows population density as the number of people per acre in seven categories with 60 or more people per acre representing the highest density areas.

**Map 2: Potential Development** – This map shows potential future developments, and critical infrastructure sites. MAPC consulted with town staff to determine areas that were likely to be developed or redeveloped in the future.

**Map 3: Flood Zones** – The map of flood zones used the FEMA Q3 Flood Zones as its source. For more information, refer to [http://www.fema.gov/fhm/fq\\_q3.shtm](http://www.fema.gov/fhm/fq_q3.shtm). The definitions of the flood zones are described in more detail at [http://www.fema.gov/fhm/fq\\_term.shtm](http://www.fema.gov/fhm/fq_term.shtm). The flood zone map for each community also shows repetitive loss sites, critical infrastructure and municipally owned and protected open space. As defined by the Community Rating System (CRS) of the National Flood Insurance Program (NFIP), a repetitive loss property is any property, which the NFIP has paid two or more flood claims of \$1,000 or more in any given 10-year period since 1978. For more information on repetitive losses see <http://www.fema.gov/nfip/replps.shtm>.

**Map 4: Earthquakes and Landslides** – This information came from NESEC. For most communities, there was no data for earthquakes because only the epicenters of an earthquake are mapped.

The landslide information shows areas with either a low susceptibility or a moderate susceptibility to landslides based on mapping of geological formations. This mapping is highly general in nature. For more information on how landslide susceptibility was mapped, refer to <http://pubs.usgs.gov/pp/p1183/pp1183.html>.

**Map 5: Hurricanes and Tornadoes** – This map shows a number of different items. The map includes the storm tracks for both hurricanes and tropical storms. This information must be viewed in context. A storm track only shows where the eye of the storm passed through. In most cases, the effects of the wind and rain from these storms were felt in other communities even if the track was not within that community. This map also shows the location of tornadoes with a classification as to the level of damages. What appears on the map varies by community since not all communities experience the same wind-related events. These maps also show the 100 year wind speed.

**Map 6: Average Snowfall** – This map shows the average snowfall, repetitive loss structures and open space. It also shows storm tracks for nor'easters, if any storms tracked through the community.

**Map 7: Composite Natural Hazards** - This map shows four categories of composite natural hazards for areas of existing development. The hazards included in this map are 100 year wind speeds of 110 mph or higher, low and moderate landslide risk, FEMA Q3 flood zones (100 year and 500 year) and hurricane surge inundation areas. Areas with only one hazard were considered to be low hazard areas. Moderate areas have two of the hazards present. High hazard areas have three hazards present and severe hazard areas have four hazards present.

**Map 8: Hazard Areas** – For each community, locally identified hazard areas are overlaid on an aerial photograph dated April 2005. The critical infrastructure sites and repetitive loss sites are also shown. The source of the aerial photograph is Mass GIS.



FEMA Pre-Disaster  
Mitigation Planning Grant

CONCORD, MA

NATURAL HAZARDS MAP

Population Density and  
Developable Land



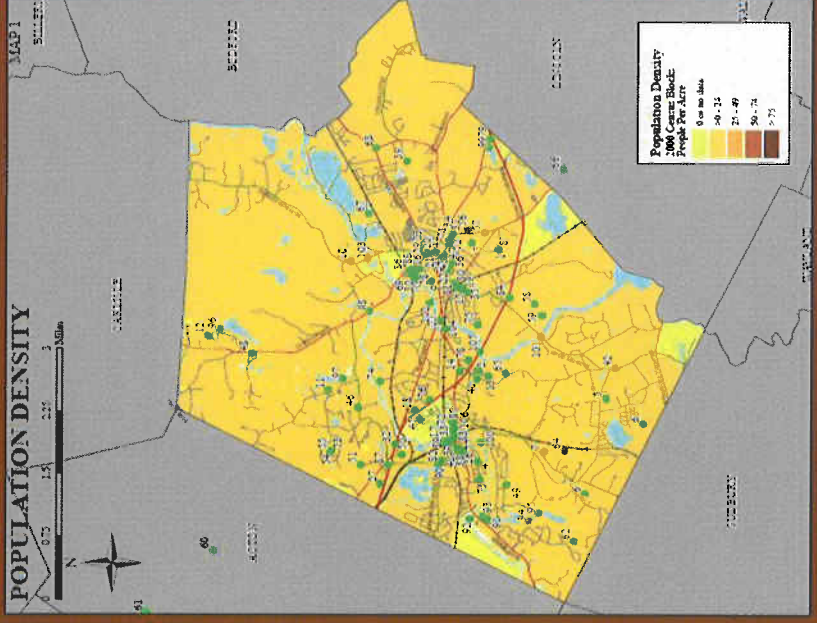
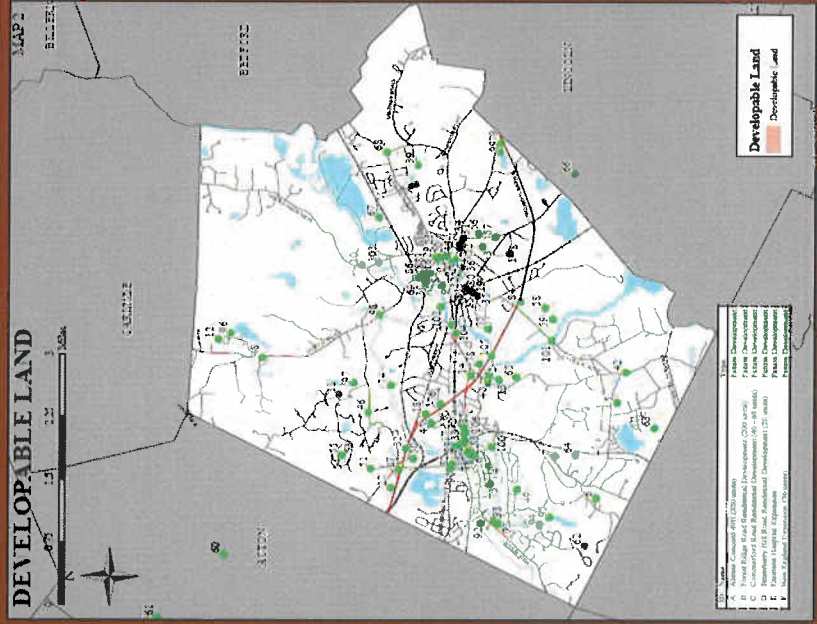
**Sites**

- Critical Infrastructure Sites
- Hazardous Waste Sites
- Flood Hazard
- Wetlands

**Roads / Transportation**

- Local
- Regional
- Interstate
- Transit

This document is the property of the City of Concord, MA. It is not to be used for any other purpose without the written consent of the City of Concord, MA. This document is the property of the City of Concord, MA. It is not to be used for any other purpose without the written consent of the City of Concord, MA.



### CRITICAL INFRASTRUCTURE SITES

ID	Name	Address	City	State	Zip	Phone	Fax	Website	Notes
1	City of Concord	100 State St	Concord	MA	01742	978-365-1000	978-365-1001	www.concordma.gov	City of Concord
2	Concord City Hall	100 State St	Concord	MA	01742	978-365-1000	978-365-1001	www.concordma.gov	City of Concord
3	Concord City Office	100 State St	Concord	MA	01742	978-365-1000	978-365-1001	www.concordma.gov	City of Concord
4	Concord City Office	100 State St	Concord	MA	01742	978-365-1000	978-365-1001	www.concordma.gov	City of Concord
5	Concord City Office	100 State St	Concord	MA	01742	978-365-1000	978-365-1001	www.concordma.gov	City of Concord
6	Concord City Office	100 State St	Concord	MA	01742	978-365-1000	978-365-1001	www.concordma.gov	City of Concord
7	Concord City Office	100 State St	Concord	MA	01742	978-365-1000	978-365-1001	www.concordma.gov	City of Concord
8	Concord City Office	100 State St	Concord	MA	01742	978-365-1000	978-365-1001	www.concordma.gov	City of Concord
9	Concord City Office	100 State St	Concord	MA	01742	978-365-1000	978-365-1001	www.concordma.gov	City of Concord
10	Concord City Office	100 State St	Concord	MA	01742	978-365-1000	978-365-1001	www.concordma.gov	City of Concord







**APPENDIX B:**

**MEETING AGENDAS FOR:**

**METRO BOSTON NORTH/WEST REGIONAL HAZARD  
MITIGATION COMMUNITY PLANNING TEAM**

**AND**

**LOCAL MULTIPLE HAZARD COMMUNITY PLANNING TEAM**



*Cristine McCombs*  
DIRECTOR



*Stephen H. Burrington*  
COMMISSIONER



*Marc D. Draizen*  
EXECUTIVE DIRECTOR

**METRO NORTH/WEST  
PRE-DISASTER  
MITIGATION PLAN**

**METROWEST**

Ashland  
Framingham  
Holliston  
Natick  
Southborough  
Wayland  
Weston

**MAGIC**

Acton  
Bedford  
Bolton  
Boxborough  
Carlisle  
Concord  
Hudson  
Lexington  
Lincoln  
Littleton  
Maynard  
Stow

**NORTH SUBURBAN**

Burlington  
Lynnfield  
Reading  
Stoneham  
Wakefield  
Wilmington  
Woburn

**THE COMMONWEALTH OF MASSACHUSETTS**

*Mitt Romney, Governor*

**MASSACHUSETTS EMERGENCY MANAGEMENT AGENCY**

400 WORCESTER ROAD, FRAMINGHAM, MA 01702-5399 508-820-2000 FAX 508-820-1404

**DEPARTMENT OF CONSERVATION AND RECREATION**

251 CAUSEWAY STREET, SUITE 600-900, BOSTON, MA 02114-2104 617-626-1250 FAX 617-626-1351

**METROPOLITAN AREA PLANNING COUNCIL**

60 TEMPLE PLACE, 6<sup>TH</sup> FLOOR, BOSTON, MA 02111 617-451-2770 FAX 617-482-7185

**MAGIC**

**Hazard Mitigation Community Planning Team**

**First Meeting**

Thursday, August 17, 9:30 AM  
Acton Town Hall, Room 204  
472 Main Street (Rt. 27), Acton, MA

**AGENDA**

- 9:30 WELCOME & INTRODUCTIONS *(Please sign contact sheet)*
- 9:45 OVERVIEW OF FEDERAL DISASTER MITIGATION ACT & PRE-DISASTER MITIGATION PLANNING
  - *Presentation, Questions & Discussion*  
--Martin Pillsbury, Manager of Regional Planning, MAPC
- 10:15 GETTING STARTED: THE METRO NORTH/WEST PRE-DISASTER MITIGATION PLAN - MAGIC SUBREGION
  - *Review of Scope of Work & Schedule*  
-- MAPC planning team: Heidi Samokar & Justin Sellers
  - *Questions & Discussion - Local Issues & Priorities*
- 11:00 PREVIEW OF MAPPING AND DATABASES FOR THE PLAN
  - *Examples from the North Shore & Metro Boston PDM Plans*  
--Alan Bishop, GIS Manager, MAPC
- 11:20 NEXT STEPS / MEETING SCHEDULE
- 11:30 ADJOURN

Please contact Martin Pillsbury at MAPC if you have any questions:  
617-451-2770, ext. 2012 or mpillsbury@mapc.org



*Ken McBride*  
ACTING DIRECTOR



*Priscilla E. Geigis*  
ACTING COMMISSIONER



*Marc D. Draisen*  
EXECUTIVE DIRECTOR

**METRO NORTH/WEST  
HAZARD MITIGATION  
PLAN**

**METROWEST**  
Ashland  
Frammingham  
Holliston  
Marlborough  
Natick  
Southborough  
Sudbury  
Wayland  
Weston

**MAGIC**  
Acton  
Bedford  
Bolton  
Boxborough  
Carlisle  
Concord  
Hudson  
Lexington  
Lincoln  
Littleton  
Maynard  
Stow

**NORTH SUBURBAN**  
Burlington  
Lynnfield  
Reading  
Stoneham  
Wakefield  
Wilmington  
Woburn

# THE COMMONWEALTH OF MASSACHUSETTS

*Deval Patrick, Governor*

**MASSACHUSETTS EMERGENCY MANAGEMENT AGENCY**  
400 WORCESTER ROAD, FRAMMINGHAM, MA 01702-5399 508-820-2000 FAX 508-820-1404

**DEPARTMENT OF CONSERVATION AND RECREATION**  
251 CAUSEWAY STREET, SUITE 600-900, BOSTON, MA 02114-2104 617-626-1250 FAX 617-626-1351

**METROPOLITAN AREA PLANNING COUNCIL**  
60 TEMPLE PLACE, 6<sup>TH</sup> FLOOR, BOSTON, MA 02111 617-451-2770 FAX 617-482-7185

## MAGIC Region Hazard Mitigation Community Planning Team

Second Regional Meeting

Thursday, March 22, 9:30 AM

Acton Town Hall, Room 204

472 Main Street (Rt. 27), Acton, MA

(see directions below)

9:30 WELCOME, INTRODUCTIONS & OVERVIEW OF AGENDA  
• *Martin Pillsbury, Project Manager*

9:40 REVIEW OF HAZARD MAPPING AND CRITICAL INFRASTRUCTURE  
DATA COLLECTION

- *Allan Bishop, GIS Manager, will present the draft regional hazard map and a sample community map,*
- *Draft local hazard maps will be distributed on CD ROM to all towns*
- *Update on Critical Facilities data base and process for local review and QA/QC of draft hazard maps and data*

10:30 UPDATE ON LOCAL PLANS

- *Heidi Samokar and Justin Sellars will discuss local and regional issues emerging in the planning process*
- *Review next steps in mapping localized hazard areas*
- *Martin Pillsbury will review plan approval requirements*

10:45 QUESTIONS AND DISCUSSION WITH TEAM MEMBERS

11:00 NEXT STEPS / MEETING SCHEDULE / ADJOURN

- *Martin Pillsbury*



*Don Boyce*  
DIRECTOR



*Richard Sullivan*  
COMMISSIONER



*Marc D. Draizen*  
EXECUTIVE DIRECTOR

**METRO NORTH/WEST  
HAZARD MITIGATION  
PLAN**

**METROWEST**

Ashland  
Framingham  
Holliston  
Marlborough  
Malden  
Southborough  
Wayland  
Weston

**MAGIC**

Acton  
Bedford  
Bolton  
Boxborough  
Canisde  
Concord  
Hudson  
Lexington  
Lincoln  
Littleton  
Maynard  
Stow  
Sudbury

**NORTH SUBURBAN**

Burlington  
Lynnfield  
Reading  
Stoneham  
Wakefield  
Wilmington  
Woburn

# THE COMMONWEALTH OF MASSACHUSETTS

*Deval Patrick, Governor*

**MASSACHUSETTS EMERGENCY MANAGEMENT AGENCY**

400 WORCESTER ROAD, FRAMINGHAM, MA 01702-5399 508-820-2000 FAX 508-820-1404

**DEPARTMENT OF CONSERVATION AND RECREATION**

251 CAUSEWAY STREET, SUITE 600-900, BOSTON, MA 02114-2104 617-626-1250 FAX 617-626-1351

**METROPOLITAN AREA PLANNING COUNCIL**

60 TEMPLE PLACE, 6<sup>TH</sup> FLOOR, BOSTON, MA 02111 617-451-2770 FAX 617-482-7185

## MAGIC Region

### Hazard Mitigation Community Planning Team

Monday, October 22, 10:30 AM

Acton Town Hall, Room 204

472 Main Street (Rt. 27), Acton, MA

(see directions below)

**10:30 WELCOME, INTRODUCTIONS & OVERVIEW OF AGENDA**

- *Martin Pillsbury, Project Manager*

**10:40 REVIEW OF HAZARD MAPPING AND CRITICAL INFRASTRUCTURE DATA COLLECTION**

- *Allan Bishop, GIS Manager, will present the final regional hazard maps and an example set of community maps*
- *Final hazard maps and Critical Facilities data bases will be distributed to all towns (hard copy and on CD-ROM)*

**11:00 UPDATE ON LOCAL PLANS**

- *Martin Pillsbury will introduce Christine Wallace, Senior Planner working on completing the PDM plans for MAGIC communities*
- *Update on local PDM annexes (Christine Wallace)*
- *Review of next steps for plan completion, review, and approval*

**11:15 REGIONAL ISSUES IN THE PDM PLAN**

- *Facilitated discussion to identify and prioritize key regional issues that should be included in the Regional PDM Plan for MAGIC*

**11:45 QUESTIONS AND DISCUSSION WITH TEAM MEMBERS**

**12:00 NEXT STEPS / MEETING SCHEDULE / ADJOURN**

- *Martin Pillsbury*



Don Boyce  
DIRECTOR



Richard Sullivan  
COMMISSIONER



Marc D. Draizen  
EXECUTIVE DIRECTOR

METRO NORTH/WEST  
HAZARD MITIGATION  
PLAN

**METROWEST**

Ashland  
Framingham  
Holliston  
Marlborough  
Natick  
Southborough  
Wayland  
Weston

**MAGIC**

Acton  
Bedford  
Bolton  
Boxborough  
Carlisle  
Concord  
Hudson  
Lexington  
Lincoln  
Littleton  
Maynard  
Stow  
Sudbury

**NORTH SUBURBAN**

Burlington  
Lynnfield  
Reading  
Stoneham  
Wakefield  
Wilmington  
Woburn

# THE COMMONWEALTH OF MASSACHUSETTS

Deval Patrick, Governor

**MASSACHUSETTS EMERGENCY MANAGEMENT AGENCY**

400 WORCESTER ROAD, FRAMINGHAM, MA 01702-5399 508-820-2000 FAX 508-820-1404

**DEPARTMENT OF CONSERVATION AND RECREATION**

251 CAUSEWAY STREET, SUITE 600-900, BOSTON, MA 02114-2104 617-626-1250 FAX 617-626-1351

**METROPOLITAN AREA PLANNING COUNCIL**

60 TEMPLE PLACE, 6<sup>TH</sup> FLOOR, BOSTON, MA 02111 617-451-2770 FAX 617-482-7185

## MAGIC Region

### Hazard Mitigation Community Planning Team

Thursday, July 10, 10:00 AM

Acton Town Hall, Room 204

472 Main Street (Rt. 27), Acton, MA

(see directions below)

## AGENDA

10:00 WELCOME & INTRODUCTIONS *(Please sign contact sheet)*

10:05 REVIEW OF THE REGIONAL HAZARD MITIGATION MAP SERIES

*Martin Pillsbury will present an overview of the regional Hazard Mitigation maps (copies will be distributed on CD-ROM)*

10:20 REGIONAL GOALS AND OBJECTIVES, ISSUES, RECOMMENDATIONS

*The team will review goals and objectives and the regional issues and recommendations to be included in the Regional Hazard Mitigation Plan.*

11:00 OVERVIEW OF FEMA BENEFIT-COST ANALYSIS FOR GRANTS

*Martin Pillsbury will present an overview of FEMA's requirements for Benefit-Cost Analysis for grant applications for mitigation projects.*

11:25 REVIEW OF NEXT STEPS:

- Complete remaining local annexes and public meetings
- Plan review and approval by MEMA & FEMA
- Plan Adoption by the towns (Selectmen/Town Council)
- Final Approval letter issued by FEMA

**Meeting Agenda**  
**Local Multiple Hazard Community Planning Team**  
**Town of Concord, MA**

November 29, 2007 9:30 AM

Public Safety Training Room - 3rd floor of Police Fire HQ at 209 Walden Street

---

- I. Review of Project Scope, Status, & Schedule**
  
- II. Selection of Goals**
  
- III. Review of Mapping**
  - a. Map Series
  - b. Areas of Concern
  - c. Potential Development
  
- IV. Discussion on Mitigation Matrix**  
*(for floods, high winds, fires, winter storms, and geologic hazards)*
  - a. Hazards / Areas of Concern
  - b. Existing Mitigation
  - c. Proposed Mitigation
  - d. Prioritization
  
- V. Next Steps**
  - a. Prepare Draft Hazard Mitigation Plan
  - b. Schedule Public Hearing to Present the Plan
  - c. Submit Draft Plan to FEMA/MEMA for review

**APPENDIX C:**  
**DOCUMENTATION OF THE PUBLIC MEETING**

**TOWN OF CONCORD  
BOARD OF SELECTMEN  
AGENDA**

**April 7, 2008**

<b>7:30 PM – Selectmen’s Room – Town House</b>	
1.	Consent Agenda: <ul style="list-style-type: none"> <li>• Town Accountant’s Warrants</li> <li>• Proclamation Old Glory Journey of Remembrance</li> <li>• One Day Special Wine and Malt License for Rotary Club of Concord Spring Pops on April 11, 2008 from 7PM – 11PM at 51 Walden</li> </ul>
2.	Town Manager’s Report
3.	7:45PM New Common Carrier License Joseph’s Transportation for The Liberty Ride
4.	8:00PM New Class II License (name change) Swedish Motor Works and Repair, LLC
5.	Draft Hazards Mitigation Plan – Chief Willette
6.	Citizen Comments
7.	Committee Liaison Reports
8.	Discussion Kevin Hurley correspondence re: Article 36
9.	Discussion Acton correspondence re: Alexan Concord development
10.	Discussion letter to MBTA concerning capital improvements to Fitchburg Line
11.	Review Draft Comments to MEPA re Route 2 Rotary Project
12.	Citizen Comments
13.	Miscellaneous/ Correspondence
14.	Executive Session for collective bargaining

**PENDING**

Monday	April 14	7:30PM	Board of Selectmen Meeting	Town House
Saturday	April 19	All Day	Patriots Day	
Sunday	April 20		Passover	
Monday	April 21	All Day	Patriots Day Observed	Town Offices Closed
Monday	April 21-25	All Day	School Vacation	
Monday	April 28	7PM	Town Meeting	CCHS
Tuesday	April 29	7PM	Town Meeting	CCHS
Wednesday	April 30	7PM	Town Meeting	CCHS
Monday	May 5	7PM	Town Meeting	CCHS
Tuesday	May 6	7PM	Town Meeting	CCHS
Monday	May 12	7:30PM	Board of Selectmen Meeting	Town House
Monday	May 19	7:30PM	Board of Selectmen Meeting	Town House
Monday	May 26	All Day	Memorial Day	Town Offices Closed
Monday	June 2	7:30PM	Board of Selectmen Meeting	Town House
Monday	June 9	7:30PM	Board of Selectmen Meeting	Town House
Monday	June 16	7:30PM	Board of Selectmen Meeting	Town House
Monday	June 23	7:30PM	Board of Selectmen Meeting	Town House
Monday	June 30	7:30PM	Board of Selectmen Meeting	Town House

**APPENDIX D:**  
**DOCUMENTATION OF PLAN ADOPTION BY THE BOARD OF  
SELECTMEN**